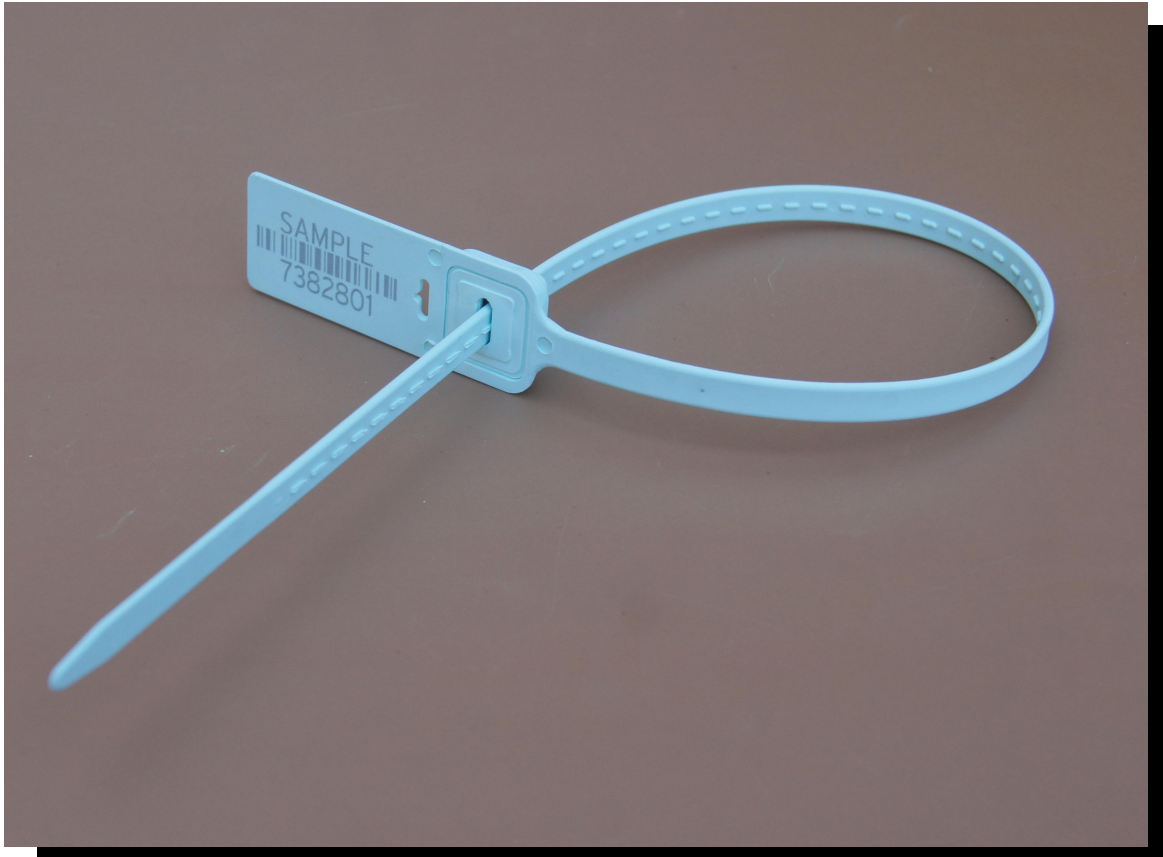


# Heavy duty pull tight plastic seal

Model:OS7382



## Seal Classification

☐ Indicative Seal

☐ Load to Failure : >48kgs ( 105lbs)

## Material

☐ Metal lock mechanism: High Quality Stainless Steel

☐ Plastic: polypropylene (PP)

## Production standard

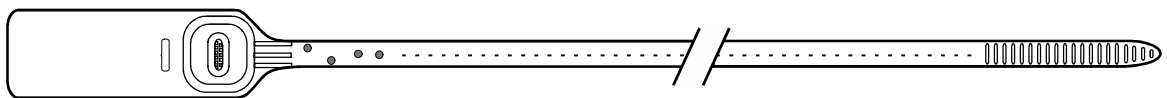
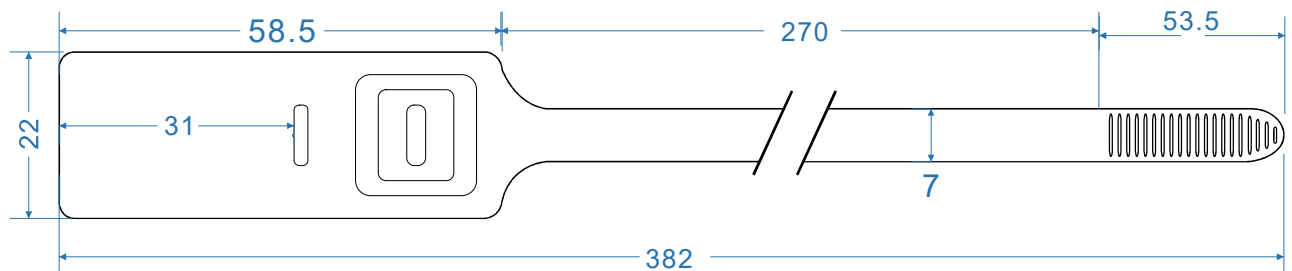
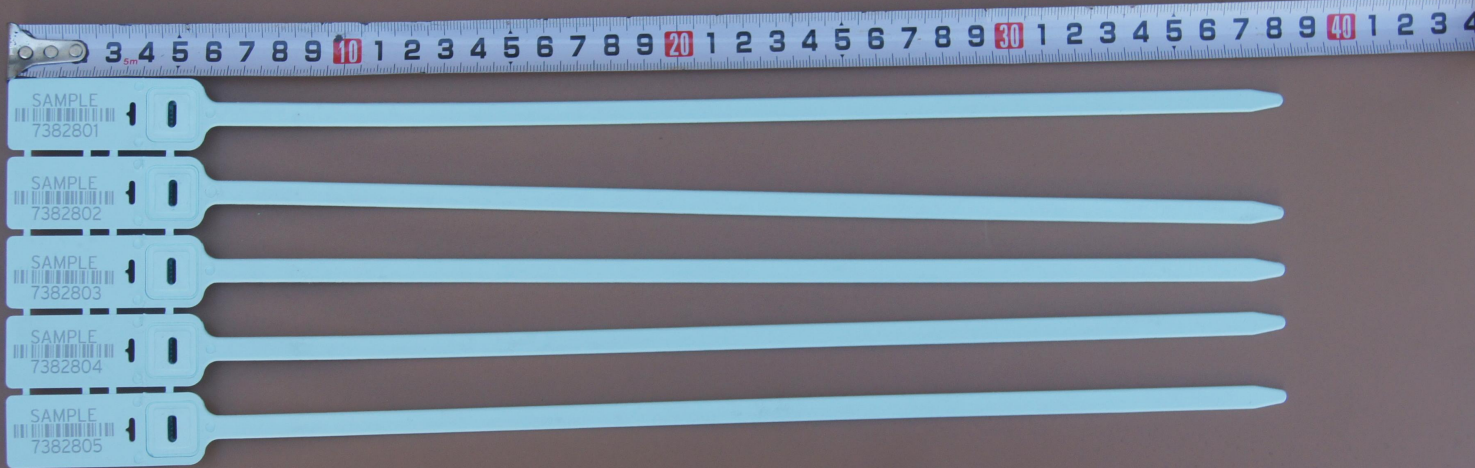
☐ ISO 17712/PAS

☐ ISO 9001: 2008



# Heavy duty pull tight plastic seal

Model: OS7382



## Color

The standard color



Black White Orange Red Blue Green Yellow



[www.ourseal.com](http://www.ourseal.com)

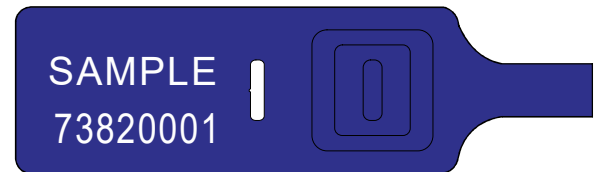
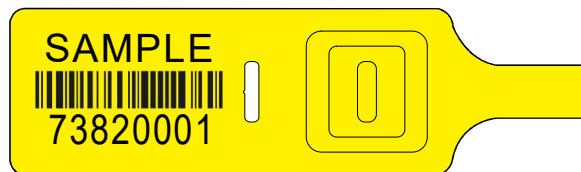
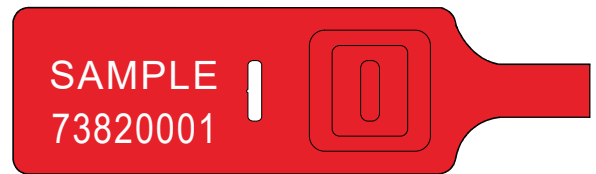
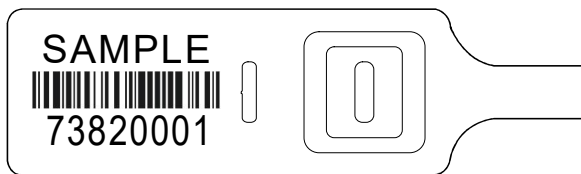
Security Create Value

# Heavy duty pull tight plastic seal

Model:OS7382

## Printing

- [] Laser engraving or hot stamp.
- [] Company Logo/Name
- [] Sequential number
- [] Bar code decoration is also available



# Heavy duty pull tight plastic seal

Model:OS7382

## Package

- [ ] 2000pcs per carton
- [ ] Net weight: 12.5kgs
- [ ] Gross weight: 13.5kgs
- [ ] Measure: 600\*390\*250mm

